



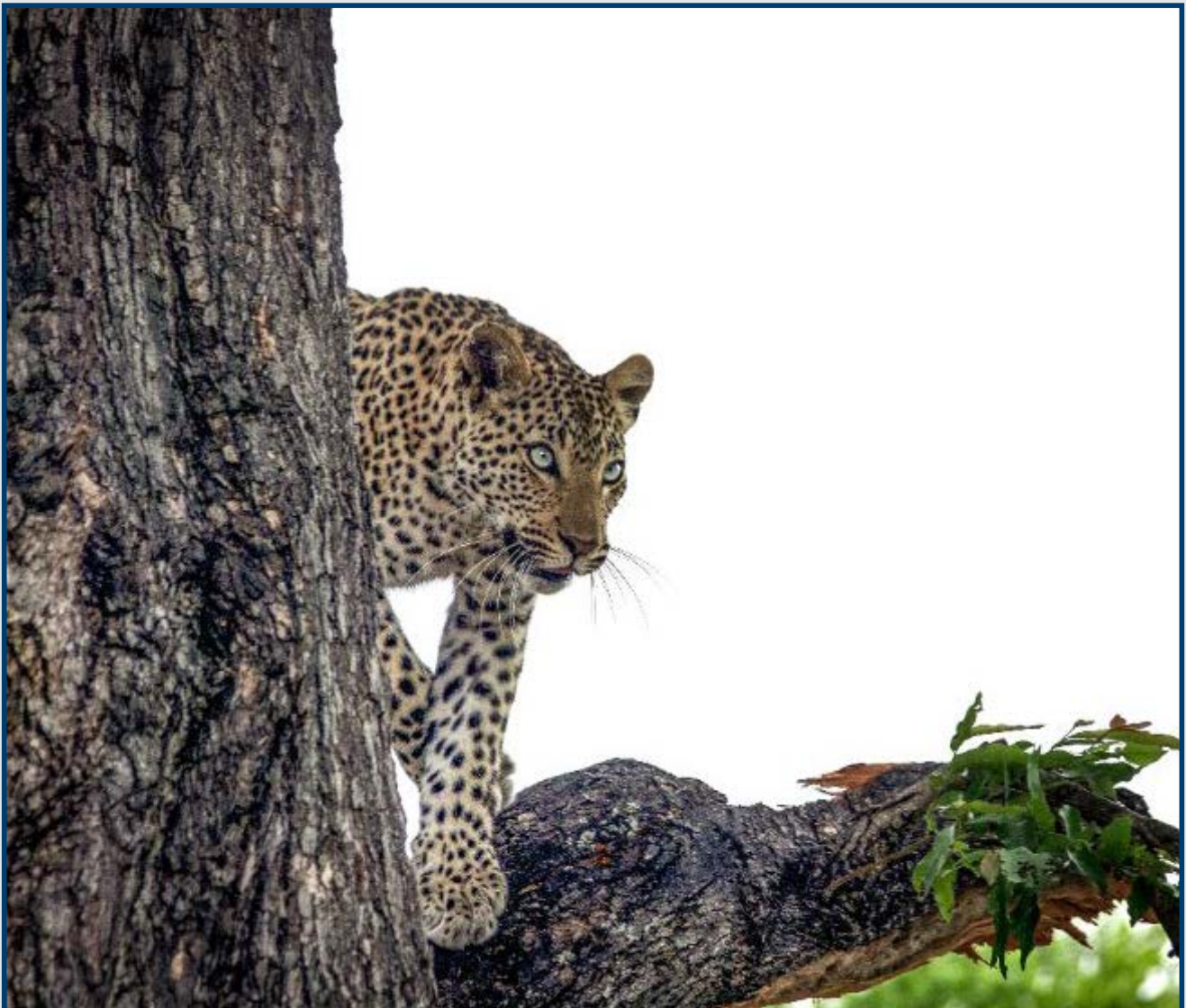
Nuusbrief / Newsletter

AUGUSTUS / AUGUST 2022

www.pmfsa.co.za

This e-newsletter is compiled from sources that are deemed to be reliable.

However, the publisher accepts no responsibility for any errors or the effect of any decisions based on this publication.



Sponsored by  **FARM**Ranger®

PMSA AGM

At the Annual General Meeting of Predation Management South Africa (PMSA) last week, chairman Niel du Preez delivered his annual report, which will be included in the September newsletter. Vice chairman Willie Clack and Gerhard Schutte (representing the Red Meat Producers' Organisation [RPO]), John Hurter (Wildlife Ranching SA), Lizanne Nel (SA Hunters and the Game Conservation Association), predation specialist Niël Viljoen, and Leon de Beer (general manager of the National Wool Growers' Association) were present, while Prof Gareth Bath (Livestock Welfare Coordinating Committee) and dr Nkabeng Maruping-Mzileni attended online.



Attendees at PMF annual meeting.



Photo: FLTR – Gerhard Schutte, Marco Coetzer (Mohair SA), John Hurter, Lizanne Nel, Frikkie Wentzel (EC RPO), Leon de Beer, Niel du Preez, Tim de Jongh (EC Conservation), Willie Clack and Niel Viljoen.

Predation issues – Karoo National Park

Predation specialist Niël Viljoen recently attended the annual meeting of Agri Western Cape and SANPARKS in Beaufort West. He reported positively on the lion issue with seven of them getting collared.

A WhatsApp group among SanParks, rangers and neighbouring farmers proves to be working well, as any problems alongside the fence are immediately communicated and addressed by all parties. The commitment from all the role players and the appointment of a new parks manager seem to be bearing fruit.

However, he is concerned that some of the fences are not up to standard. A lot of time and energy are spent on bottom jackal proof fencing, with the condition of the upper part not so good. From his observation of one of the monitor farms adjacent to the Karoo National Park, jackal climb over 1,2 m fencing, and smaller predators are coming through.

Neighbouring farms are experiencing huge losses due to brown hyenas, which is alarming, and this was addressed at the meeting.

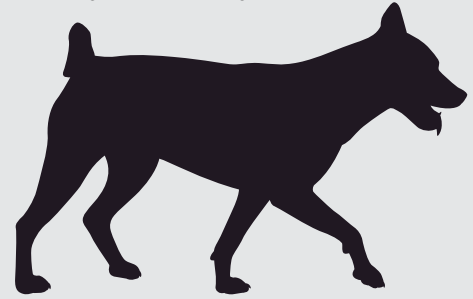
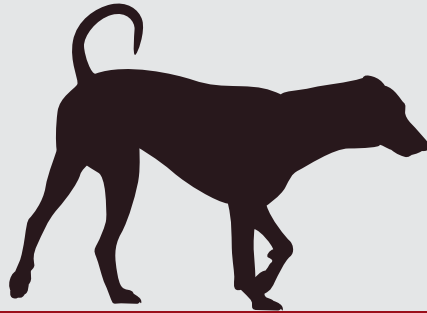
According to dr Nkabeng Maruping-Mzileni, SANParks representative on Predation Management SA (PMSA), the issue of brown hyenas breaking out into neighbouring farms is not isolated to the Karoo National Park. Although brown hyena naturally occur in the landscape, National Parks act as a refuge and facilitate the growth of these populations. As they are not internally equipped to assess the situation, predation specialist Niël Viljoen will be approached for guidance to determine a positive outcome.

As SANParks maintains regular population management actions to control the lion population, the situation is reviewed to assess the best response. This year it is time to review the 5 year strategy for each of the lion parks.



Predation management communal areas

A communal monitor farm was started in the beginning of the year with the identification of 2 shearing sheds in Mount Frere. Livestock numbers and proper statistics have been recorded to form a baseline for the monitoring. The shearing sheds were visited by Niël Viljoen recently. The types of predators have been identified, with stray dogs being a huge threat to the communities. Statistics will be analysed next year.



Square Kilometre Array (SKA)

At the annual meeting of the Predation Management Forum last week, predation specialist Niël Viljoen reported that he has been requested by SANParks to be involved with the capturing and collaring of caracal and jackal in the Meerkat National Park as part of a research project with UNISA. This project highlighted the situation around several national parks that have meso-predators impacting on the livestock farming of neighbours.

Dr Nkabeng Maruping-Mzileni, the regional ecologist for SANParks, confirmed that a Forum, including veterinarians, is to be established to address specific needs, as those are very different from standard park management. Mr. Viljoen will be approached to serve on this forum.



Boer saam met die natuur

Die Cape Leopard Trust, in samewerking met Cape Nature, het 'n reeks werksinkels saamgestel oor roofdierkonflikverligting en boerderybestuursmetodes, wat die natuur beskerm en volhoubaarheid en produktiwiteit aanspreek. Kontak Chavoux Luyt met enige navrae by communityoutreach@capeleopard.org.za of WhatsApp 082 791 1384.

BOER SAAM MET DIE NATUUR werksinkel reeks

Hierdie opleiding moedig roofdier konflik verligting en boerdery bestuursmetodes aan wat die natuur beskerm en volhoubaarheid en produktiwiteit verhoog.

3 voldag werksinkels sal tussen Augustus en Oktober 2022 by twee plekke in die Wes Kaap aangebied word - Montagu Country Hotel en Langgewens Navorsings Plaas tussen Malmesbury en Moorreesburg.

Holistiese Droogte Bestuur

- 2 Augustus, Montagu
- 4 Augustus, Langgewens

Holistiese Predasie Bestuur

- 7 September, Montagu
- 21 September, Langgewens

Toegepaste Holistiese Agri-Ekologiese Bestuur

- 5 Oktober, Langgewens
- 19 Oktober, Montagu

- R200 per voldag werksinkel (09h-16h) insluitend middagete
- Deelnemers word aangemoedig om al 3 werksinkels by te woon om die opleiding maksimaal te benut, maar dis ook moontlik om individuele dae by te woon.
- Bespreek: capeleopard.org.za/shop/events
- Lees meer by bit.ly/CLTFarmerDays2022

Kontak vir Chavoux Luyt met enige navrae
Epos: communityoutreach@capeleopard.org.za
of WhatsApp: 082 791 1384



CAPE
LEOPARD
TRUST

in vennootskap met



CapeNature



SA COLLEGE FOR TOURISM
HERDING
ACADEMY

CAPE NATURE AND ITS ROLE IN PREDATION MANAGEMENT

During the recent information day in Prins Albert, themed “Jakkals uit die bos gesels”, Cape Nature Conservation manager, Theresa van der Westhuizen, highlighted their role in predation management, which involves the following:

- Understanding the cause of the problem/losses being experienced
- Understanding the distribution patterns, population dynamics, ecology, and behaviour of the damage-causing species
- Maintaining respect towards the predator responsible for losses
- As far as possible identifying the correct individual predator responsible for the losses through a thorough evaluation of these losses
- Implementing non-lethal mitigation management to stop or minimise losses and the translocation or euthanasia of the damage-causing animals (DCA) as a last resort if all mitigation options have been exhausted or were unsuccessful.

CapeNature accepts management methods that are:

- humane (minimal suffering);
- ecologically acceptable (minimal detrimental effect on species and the environment);
- cost-effective and practical (control method does not exceed value of losses);
- selective (problem animal vs species); and
- legal (according to act/ordinance/regulations/registers/guidelines).

Multisectoral partners include the following:

- The Department of Agriculture (green labelling)
- Predator Management Forum (permits)
- Universities (research)
- Farmers (free roaming predators)
- Local communities (hunting with dogs)
- Registered rehabilitation centres
- SAPS Stock Theft and Endangered Species Unit
- Wildlife veterinarians



CapeNature

CapeNature accepts management methods that are:

- **Humane** (minimal suffering)
- **Ecologically acceptable** (minimal detrimental effect on species and the environment)
- **Cost effective & practical** (control method does not exceed value of losses)
- **Selective** (problem animal vs species)
- **Legal** (according to act/ordinance/regulations/registers/guidelines)

KAROO PRE

Leopard-hunting technique and feeding signs



UNIVERSITY OF THE
FREE STATE
UNIVERSITEIT VAN DIE
VRYSTAAT
YUNIVESITHI YA
FREISTATA



UFS
NATURAL AND
AGRICULTURAL SCIENCES
PREDATION MANAGEMENT
CENTRE (PMC)

Identification of the predator species responsible for damage is important to decide which management approach to follow.

The Predation Management Centre (PMC) provides information leaflets on leopards. Their next leaflet in the leopard series describes some of the most common signs of predation on livestock by leopards. It also describes some of the leopard's main hunting techniques.

The ecology of the leopard influences where the risk of predation will be greatest. An understanding of where, when, and how leopards hunt, in combination with traditional livestock management strategies, can therefore reduce livestock predation by leopards effectively.

Click here to view leaflet, "Leopard hunting technique and feeding signs" – https://www.ufs.ac.za/docs/librariesprovider22/pmic-documents/04_08-predation-by-leopard.pdf?Status=Master&sfvrsn=69f54820_4/

Click here for a list of literature consulted to compile the series of leopard leaflets – [https://www.ufs.ac.za/docs/librariesprovider22/pmic-documents/bibliography_leopard-leaflets\(5\).pdf?Status=Master&sfvrsn=8cf54820_5/](https://www.ufs.ac.za/docs/librariesprovider22/pmic-documents/bibliography_leopard-leaflets(5).pdf?Status=Master&sfvrsn=8cf54820_5/)

PMC's Predators and predation webpage contains a list of links to predation management guides and manuals with useful practical advice for managing damage-causing animals, in addition to info leaflets covering the most common damage-causing animals.

Visit the PMC's website <https://www.ufs.ac.za/pmc> or contact them at PredationMC@ufs.ac.za.





Deel u bestuurs- praktyk met ons!

Daar is menige boere wat predatore doeltreffend bestuur en daarom wil ons graag sulke suksesstories aanhoor en deel met medeboere. U geslaagde bestuurspraktyk sal in die maandelikse PMF- nuusbrieff verskyn en ook op die webtuiste geplaas word. Skakel Bonita Francis by (041) 365 5030 of per e-pos by nwga@nwga.co.za.



FARMRANGER.CO.ZA

STOCK THEFT ? PREDATORS ?



Get alarm calls when **DANGER** is detected



Live **GPS** tracking in app during an alarm



Just **ONE** collar covers a flock of 450 sheep

Tel : 028 212 3346



FARM Ranger

LIVESTOCK SECURITY COLLARS



SHEEP



CATTLE



GOATS



HORSES