

**ANIMAL
HEALTH
IS IN
OUR
DNA**



Dr Didi Claassen

BSc, BVSc, MMedVet (Pathology)



Executive: Technical and Marketing Support



Tel: +27 (0)12 817 9060



Email: didi.claassen@afrijet.co.za

Web: www.afrijet.co.za

Rabies
*Atypical symptoms in
animals*

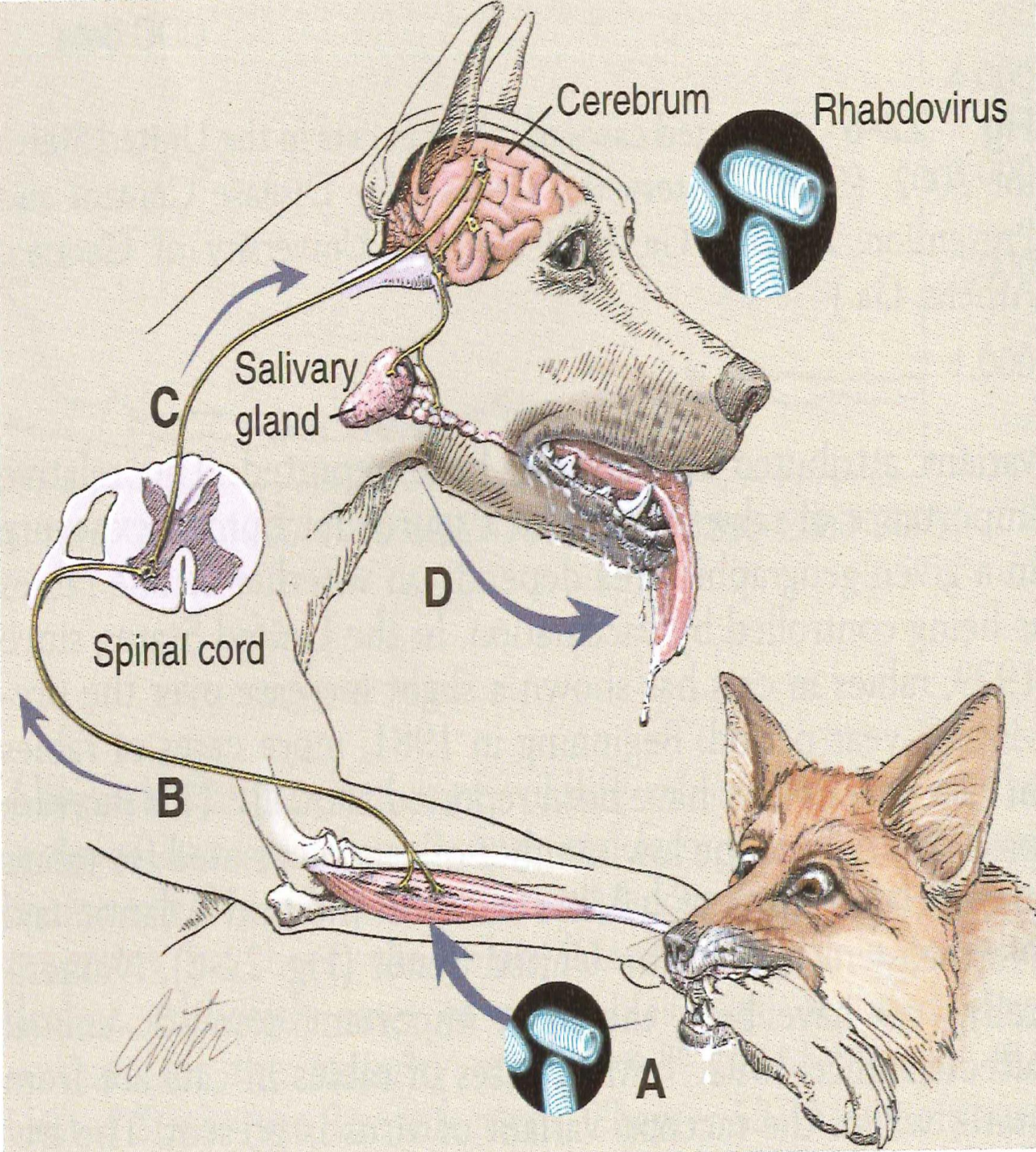
A large flock of sheep is shown in a field, filling the middle section of the image. The sheep are white with some brown markings. A red banner with a white DNA double helix pattern on either side is overlaid across the middle of the sheep. The banner contains the text 'WHAT WE DO' in white, bold, uppercase letters. The background of the top half of the image is a bright blue sky with scattered white clouds.

WHAT WE DO

Afrivet sets new standards for the animal health industry by helping pet owners, farmers, veterinarians and other professionals in the field of agriculture to contribute to a successful and professional livestock farming industry in Africa. This we do through our innovative products, professional knowledge solutions, support services via passionate and purposeful local and global collaboration.

- Any mammal susceptible
- Transmitted mainly via saliva from bite wounds
- Dogs are our biggest concern
- The incubation period varies (2 weeks to 18 months)





Changed behaviour!!



Photo by ROMAN ODINTSOV from Pexels

Dogs

- **Changed temperament**
- Bite and attack anything
- Restless, nervous
- Aimless wandering
- Fixed stare
- Drooling
- **“Bone in throat”**
- Fever
- Progressive paralysis
- Scared of light and sounds
- Convulsions
- Muscle spasms
- Death



Cats

- Generally aggressive
- Unprovoked attacks
- Biting (don't release grip)
- Abnormal vocalization
- Convulsions
- Coma
- Hiding
- Staring
- Muscle tremors
- **Some affectionate and purr**
- Extend and retract claws



Photo by Kirsten Bühne from [Pexels](#)

Cattle

- Several animals affected at the same time
- **Hoarse bellow**
- **Aggressive**
- Attack inanimate objects
- Wind-sucking
- **“Bone in throat”**
- **Paralysis**
- Salivation
- Hypersexual behaviour
- Fixed stare
- Pica
- Straining
- Emphysema

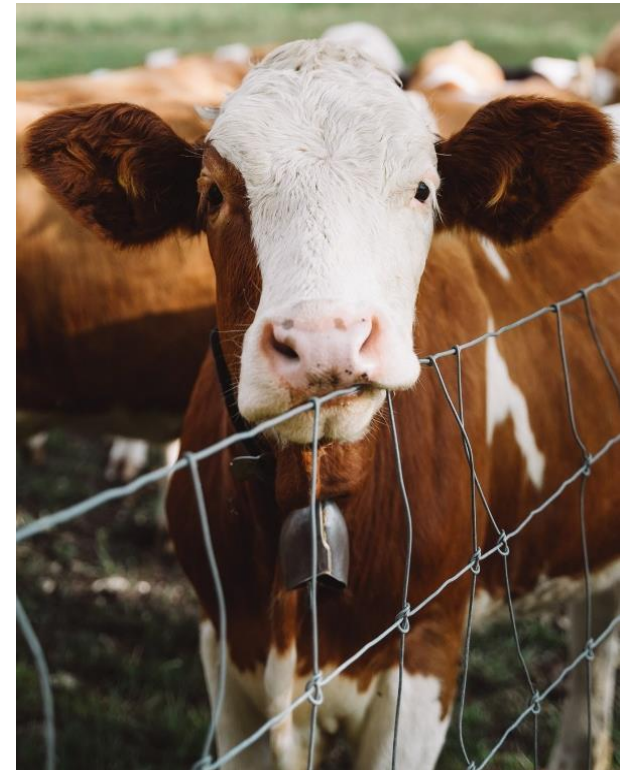


Photo by [Alex Azabache](#) from [Pexels](#)



Afrivet
Animal health is in our DNA

Sheep and Goats

- Similar to cattle
- Hypersexual behaviour is prominent
- Incessant bleating
- Aimless running
- Grinding teeth



Photo by [Kat Jayne](#) from [Pexels](#)

Horses

- Fever
- Behavioural changes
- Aggression
- Thrashing
- Paralysis (can't swallow)
- Bite wound site



Photo by [Jean van der Meulen](#) from [Pexels](#)

Wildlife

- Lose fear of humans
- Mongooses usually appear tame
- Jackal aggressive
- Badgers aggressive
- Kudu tame and paralysed
- Wild cats similar to cats





Afrivet
Animal health is in our DNA

What about....

- **Rats**
- **Mice**
- **Monkeys**
- **Bats**



**NOT FOR SENSITIVE
VIEWERS**

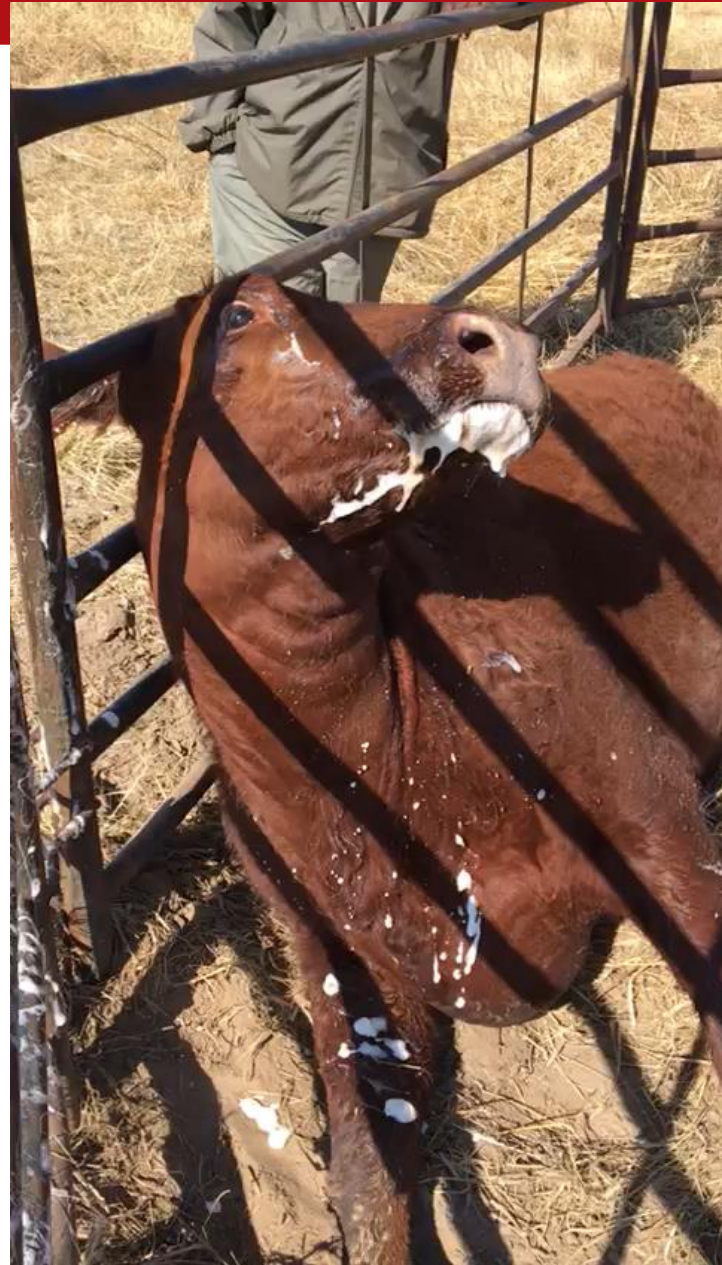


Afrivet
Animal health is in our DNA















Thank you to the vets and AHTs who provided the footage.

The videos were taken across RSA.