

# African swine fever outbreak and surveillance update report

---

29 February 2024



agriculture, land reform  
& rural development

---

Department:  
Agriculture, Land Reform and Rural Development  
**REPUBLIC OF SOUTH AFRICA**

Report compiled by:  
Directorate: Animal Health

\*

---

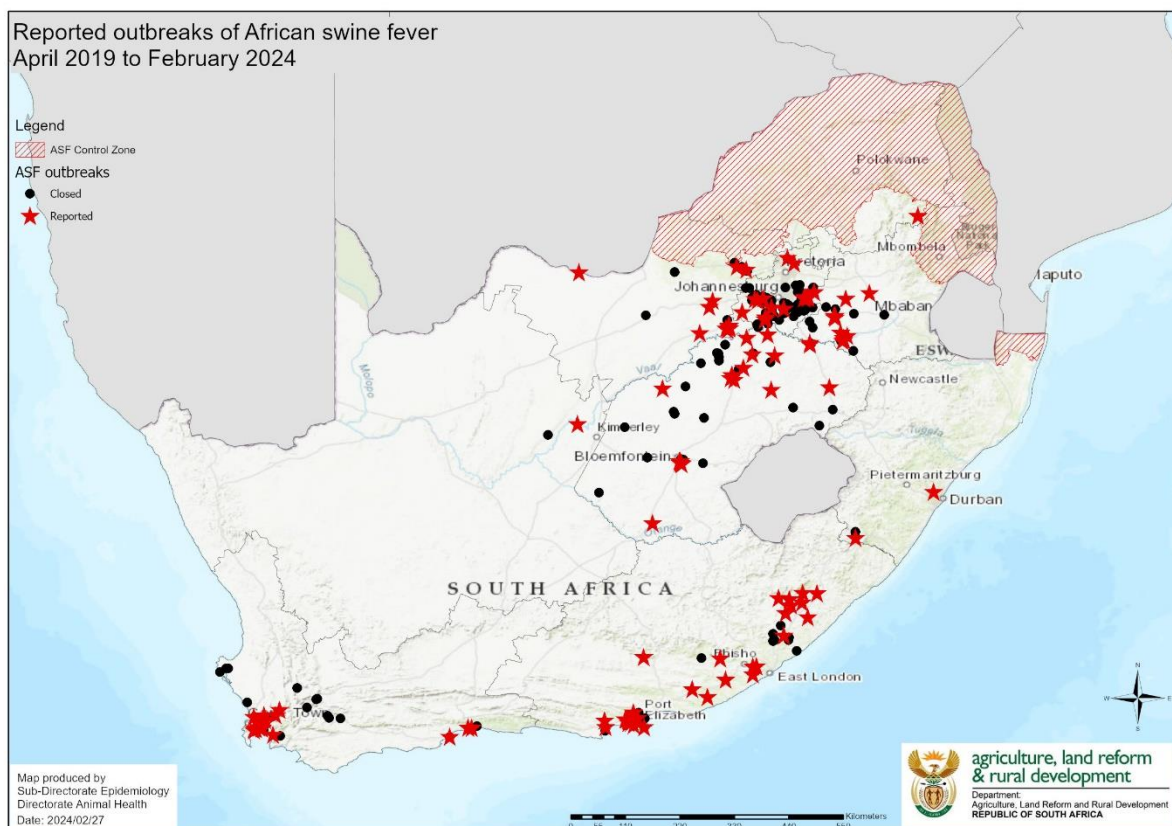
\* This report includes all information as available by close of business on the indicated date. All the updates contained in this report may not currently reflect on the OIE WAHIS system due to technical difficulties with the OIE reporting system \*

# 1. Introduction and summary

South Africa currently has four open ASF outbreak events, and one outbreak event which was resolved and closed with the World Organisation for Animal Health (WOAH).

- The first outbreak event started in 2019 and is affecting Free State, Gauteng, Mpumalanga, North-West and Northern Cape provinces, with a total of 186 reported outbreaks (61 open and 125 resolved).
- The second outbreak event started in 2020 and is in Eastern Cape Province with 44 reported outbreaks (30 open and 14 resolved).
- The third outbreak event started in 2021 and is in Western Cape Province with 54 outbreaks (27 open and 27 resolved).
- The fourth outbreak event started in 2022 and is in KwaZulu-Natal Province with 2 reported outbreaks (both resolved) and has now been closed.
- The fifth outbreak event started in 2023 in KwaZulu-Natal with 2 reported outbreaks (2 open).

In 2022 there have also been two reported cases in Limpopo within the legislated ASF controlled area.



## Summary of active outbreaks per province:

Province	Number of open outbreaks	Number of resolved outbreaks	Total number of outbreaks	Start date of last reported outbreak
Eastern Cape	30	14	44	07 December 2023
Free State	21	25	46	17 February 2024
Gauteng	11	84	95	29 January 2024
KwaZulu-Natal	2	0	2	09 September 2023
Limpopo	1	0	1	19 December 2023
Mpumalanga	15	11	26	12 May 2023
North West	12	5	17	18 August 2023
Western Cape	27	27	54	03 February 2024
Northern Cape	1	0	1	3 October 2023
<b>Total</b>	<b>120</b>	<b>167</b>	<b>286</b>	

## 2. Details of open outbreaks

### 2.1 Affected Municipalities

#### Eastern Cape

No new outbreaks reported since the previous update.

#### Free State

Three new outbreaks were reported, two in Mangaung Local Municipality and one in Nketoana local municipality.

#### Gauteng

Two new outbreaks were reported, one in the City of Tshwane Metropolitan Municipality and one in Midvaal Local Municipality.

#### KwaZulu-Natal

No new outbreaks reported since the previous update.

#### Mpumalanga

No new outbreaks reported since the previous update.

#### North West

No new outbreaks reported since the previous update.

### Western Cape

One new outbreak reported in George Local Municipality.

### Northern Cape

No new outbreak reported since the previous update.

### Limpopo

No new outbreak reported since the previous update.

## **2.2 Confirmation of diagnosis**

For all reported outbreaks, confirmation of disease was done by positive PCR on organ samples (in some cases whole blood samples) at the ARC Onderstepoort Veterinary Research Transboundary Animal Diseases laboratory (OVR-TAD).

## **2.3 Control measures implemented**

Control measures are based on quarantine and movement controls. Awareness drives highlighting essential biosecurity measures to enable pig owners to prevent infection of their pigs have been ongoing including the following recommendations:

- Confinement of pigs to prevent contact with other free roaming pigs or wildlife;
- Strictly purchase pigs directly from healthy herds;
- Feed only safe recommended feed to pigs;
- Not allowing visitors contact with pigs;
- Before having contact with pigs, wash hands, only use clean clothes, shoes, equipment and vehicles (that have not been in contact with other pigs)

## **3. Epidemiology**

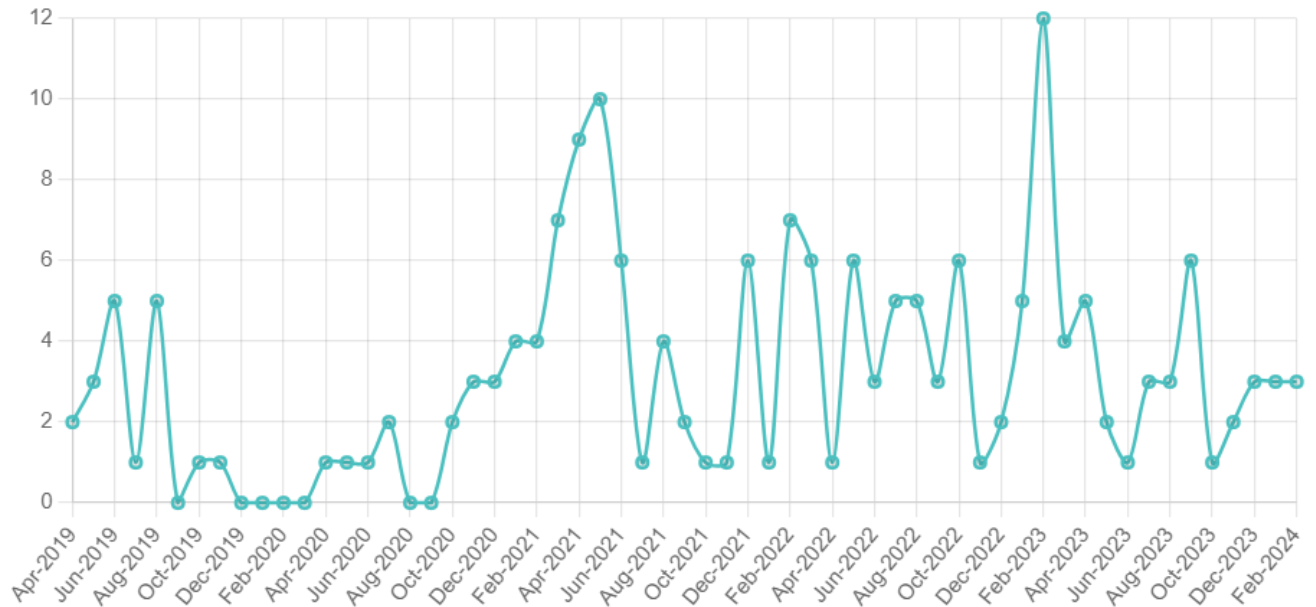
Most of the reported outbreaks have had the ASF virus sequenced. OVR-TAD has determined two genotypes involved:

- Currently the outbreak event in Free State, Gauteng, Mpumalanga, and North West have been affected by both Genotype I and II viruses.
- The Eastern Cape and Western Cape outbreak events are affected only by Genotype II.

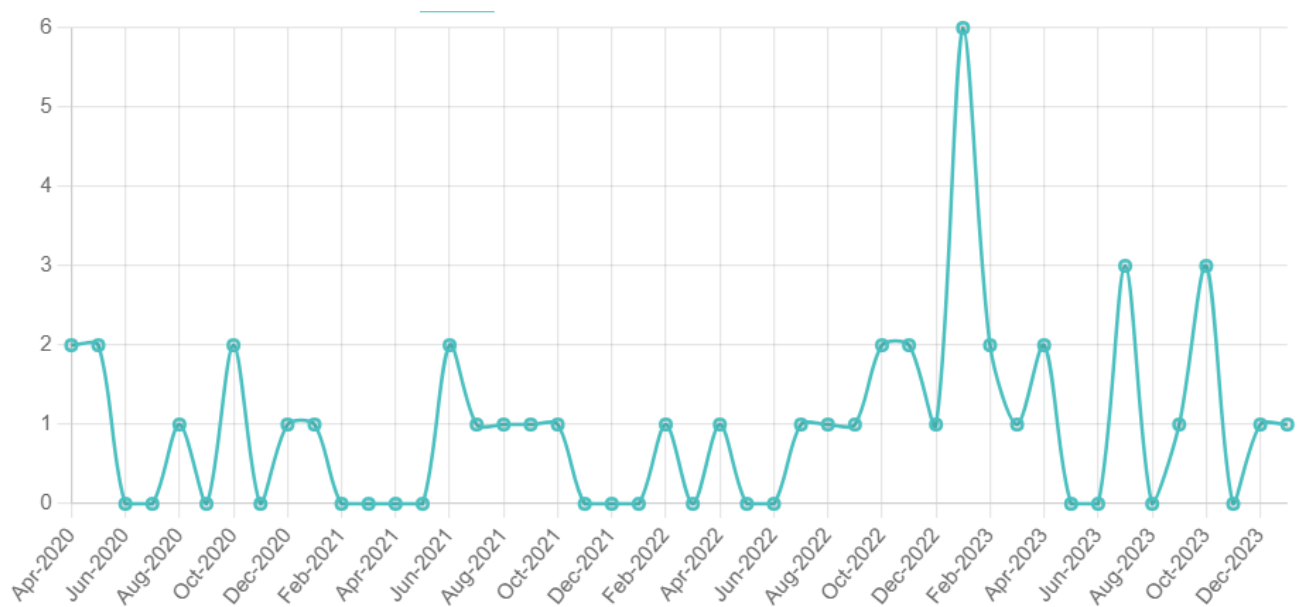
### 3.1 Graphs

The following figures show the trend of ASF outbreaks reported per month per outbreak event:

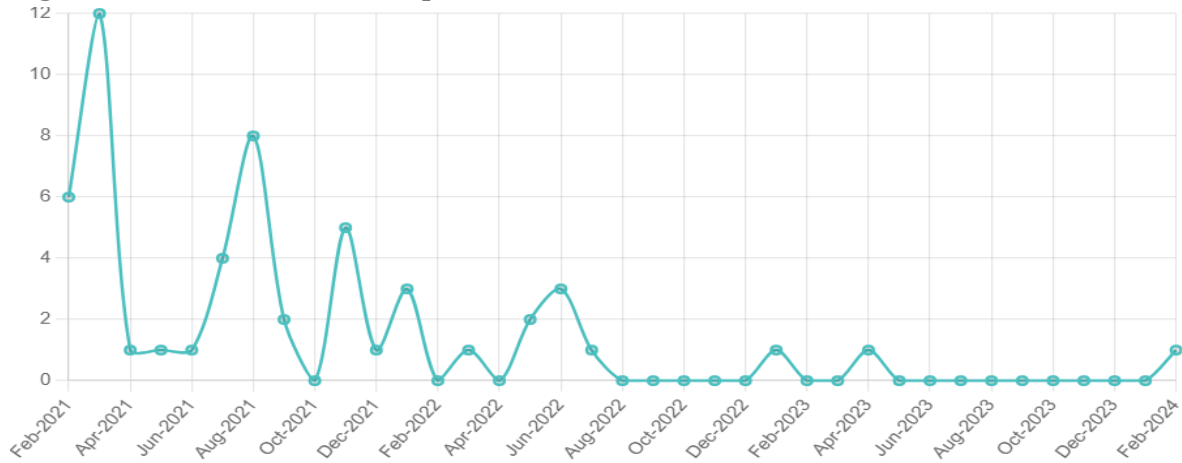
**Fig1. MPU\_2019 Outbreaks per month since start of event**



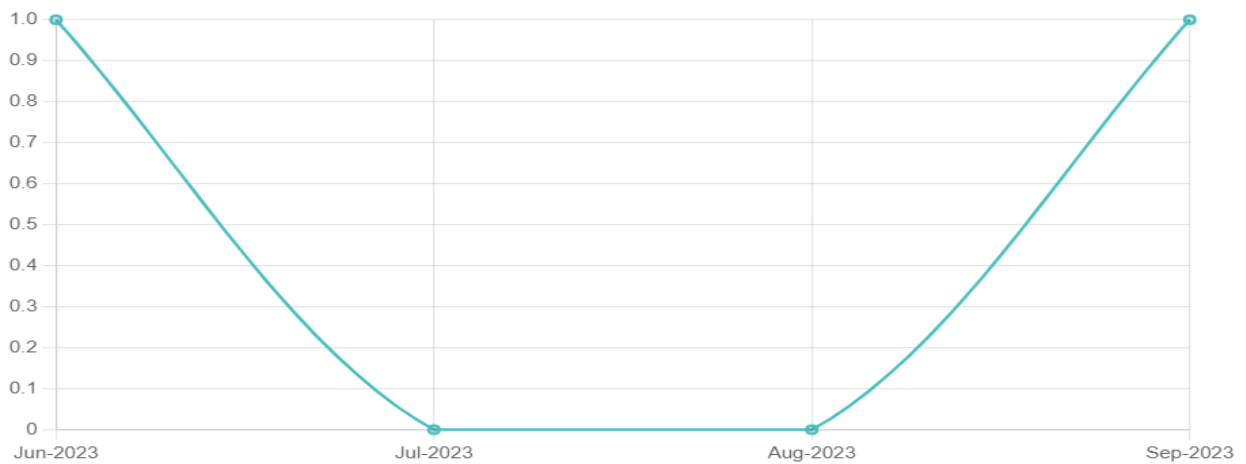
**Fig 2. ECP\_2020 Outbreaks per month since start of event**



**Fig 3: WCP\_2021 Outbreaks per month since start of event**



**Fig 4: KZN\_2022 Outbreaks per month since start of event**



#### **4. Surveillance**

Surveillance for ASF remains ongoing. All movements of pigs from infected properties and areas during the period prior to and following diagnosis are traced and any suspect disease outbreaks in pigs investigated. If suspect clinical signs are observed, samples are collected to confirm the diagnosis.

  
\_\_\_\_\_

**Dr Mpho Maja**

**Director: Animal Health**