

African swine fever outbreak and surveillance update report

31 March 2025



agriculture, land reform
& rural development

Department:
Agriculture, Land Reform and Rural Development
REPUBLIC OF SOUTH AFRICA

Report compiled by:
Directorate: Animal Health

1. Introduction and summary

African Swine fever (ASF) is a controlled disease in terms of the Animal Diseases Act, 1984 (Act No. 35 of 1984). Historically, ASF only occurred within the legislated ASF controlled area in South Africa, as described in Table 1 of the Animal Diseases Regulations (R.2026 of 1986). Specific additional control measures are described for this area in Table 2 Animal Diseases Regulations, due to the presence of the sylvatic cycle of ASF (between warthogs and soft ticks) in this area.

More recently, two main epidemics of ASF in domestic pigs were identified outside of the South African ASF-controlled area. The first occurred in 2012 with outbreaks in Gauteng and Mpumalanga provinces, and the second occurred in 2016–2017 with outbreaks in the North West, Free State and Northern Cape provinces. These outbreaks involved ASF outbreaks in domestic pigs, in the area previously free from ASF, by means of the domestic cycle of ASF (spread via pig to pig contact and contact with pig products). Since 2019, South Africa has experienced wider spread outbreaks of ASF in North West, Mpumalanga, Gauteng, Free State and Northern Cape Provinces, with the Western Cape and Eastern Cape Provinces affected for the first time.

Outside of the legislated ASF controlled area, South Africa currently has three open ASF outbreak events, and two outbreak events which were resolved and closed with the World Organisation for Animal Health (WOAH):

- The first outbreak event started in 2019 and is affecting Free State, Gauteng, Mpumalanga, North-West and Northern Cape provinces, with a total of 210 reported outbreaks (42 open and 168 resolved).
- The second outbreak event started in 2020 and is in Eastern Cape Province with 52 reported outbreaks (20 open and 32 resolved).
- The third outbreak event started in 2021 and is in Western Cape Province with 60 outbreaks (7 open and 53 resolved).
- Two outbreak events started in 2022 and 2023 respectively in KwaZulu-Natal Province. Both outbreak events had 2 reported outbreaks each. All four outbreaks were resolved and both outbreak events in KwaZulu-Natal have been closed.

There were four ASF outbreaks reported within the legislated ASF controlled area. Three outbreaks were reported in Limpopo (two occurred in 2022 and one in 2023), while one outbreak was reported in Mpumalanga Province (occurred in 2023).

Figure 1: Map of reported outbreaks of ASF, April 2019 – March 2025

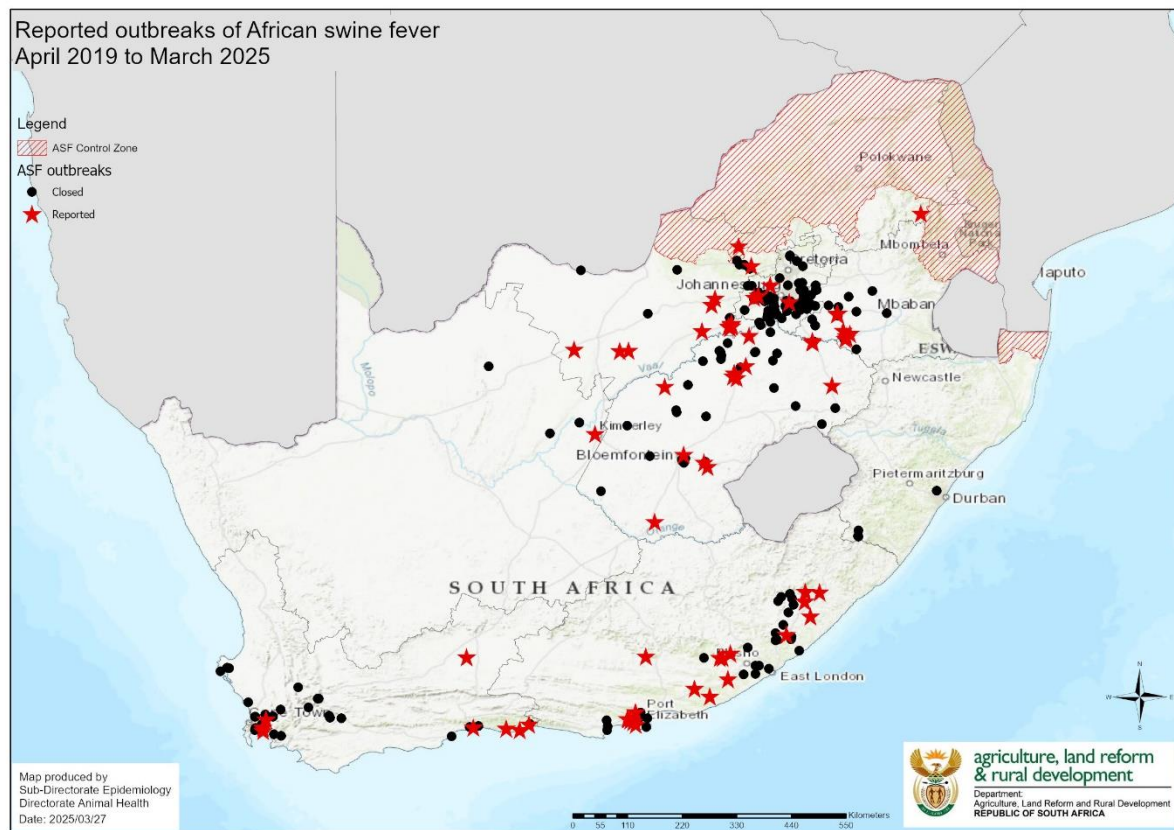


Table 1: Summary of active outbreaks per province*:

Province	Number of open outbreaks	Number of resolved outbreaks	Total number of outbreaks	Start date of last reported outbreak
Eastern Cape	20	32	52	12 January 2025
Free State	15	34	49	15 May 2024
Gauteng	4	105	109	06 March 2025
KwaZulu-Natal	0	4	4	28 September 2023
Mpumalanga	7	19	26	12 May 2023
Northwest	14	8	22	05 March 2025
Northern Cape	1	2	3	12 May 2024
Western Cape	7	53	60	12 November 2024
Total	68	257	325	

*This table does not reflect outbreaks in the legislated ASF controlled area

2. Details of new outbreaks

2.1 Status update since the last update report issued on 28 February 2025

No new outbreaks were reported in the Gauteng, KwaZulu-Natal, Mpumalanga, Limpopo, Free State, Eastern Cape and Northern Cape Provinces during March 2025.

North West

One new outbreak located in Mamusa was reported to WOAHA in March of 2025

Gauteng

Two new outbreaks in Randfontein and one outbreak in Ekurhuleni were reported to the WOAHA in March of 2025

2.2 Confirmation of diagnosis

For all reported outbreaks, confirmation of disease was achieved by positive PCR on organ samples (in some cases whole blood samples) at the ARC Onderstepoort Veterinary Research Transboundary Animal Diseases laboratory (OVR-TAD). Serology is not indicated for confirmation of an acute outbreak.

2.3 Control measures implemented

There is no effective vaccination or treatment available for ASF. Control measures are based on quarantine and movement controls. Awareness drives, highlighting essential biosecurity measures to enable pig owners to prevent infection of their pigs, have been ongoing and include the following recommendations:

- Confinement of pigs to prevent contact with other free roaming pigs or wildlife;
- Strictly purchase pigs directly from healthy herds;
- Feed only safe, recommended feed to pigs;
- Do not allow visitors to make contact with pigs;
- Wash hands before making contact with pigs and only use clean clothes, shoes, equipment and vehicles (that have not been in contact with other pigs);
- Carcasses of infected pigs must be disposed of in a responsible manner to prevent further spread of disease, and must be in line with local environmental legislation.

3. Details of closed outbreaks

3.1 Status update since the last update report issued on 28 February 2025

Eastern Cape

One outbreak was closed in the Engcobo area during the month of March 2025

Kwazulu Natal

One outbreak in Greater Kokstad was closed in March 2025.

4. Epidemiology

Through sequencing of relevant ASF outbreaks, the OVR-TAD has determined that two genotypes are currently involved:

- The outbreak event in Free State, Gauteng, Mpumalanga, and North West have been caused by both Genotype I and II viruses.
- The Eastern Cape and Western Cape outbreak events have been caused by Genotype II only.

The epidemiological curves show the trend of ASF outbreaks reported per month per outbreak event. Figure 2 shows that the Mpumalanga, Free State, North West, Gauteng and Northern Cape Provinces outbreaks are ongoing, but seem to be decreasing and remains stable after the major peaks in May 2021 and February 2023. Figure 3 shows that the Eastern Cape Province outbreaks are ongoing at a stable level, despite a peak of cases in January 2023. Figure 4 shows that the Western Cape Province outbreaks have been resolving and remains stable, after a peak incidence of cases were reported in January 2023.

Figure 2: Mpumalanga, Free State, North West, Gauteng and Northern Cape Provinces outbreaks per month since start of event in 2019

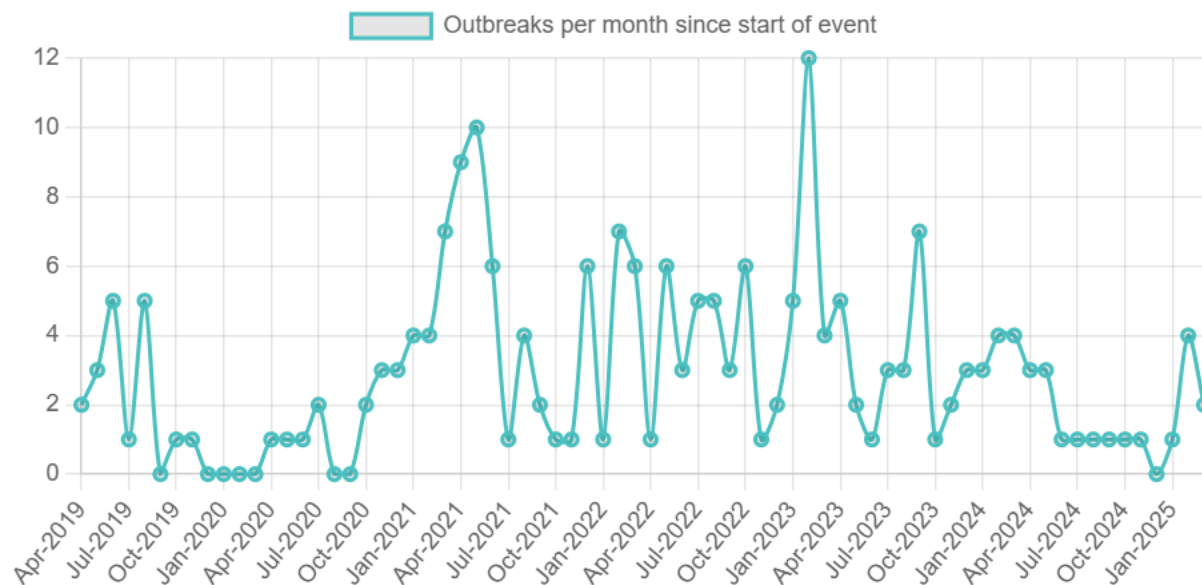


Figure 3: Eastern Cape Province outbreaks per month since start of event in 2020

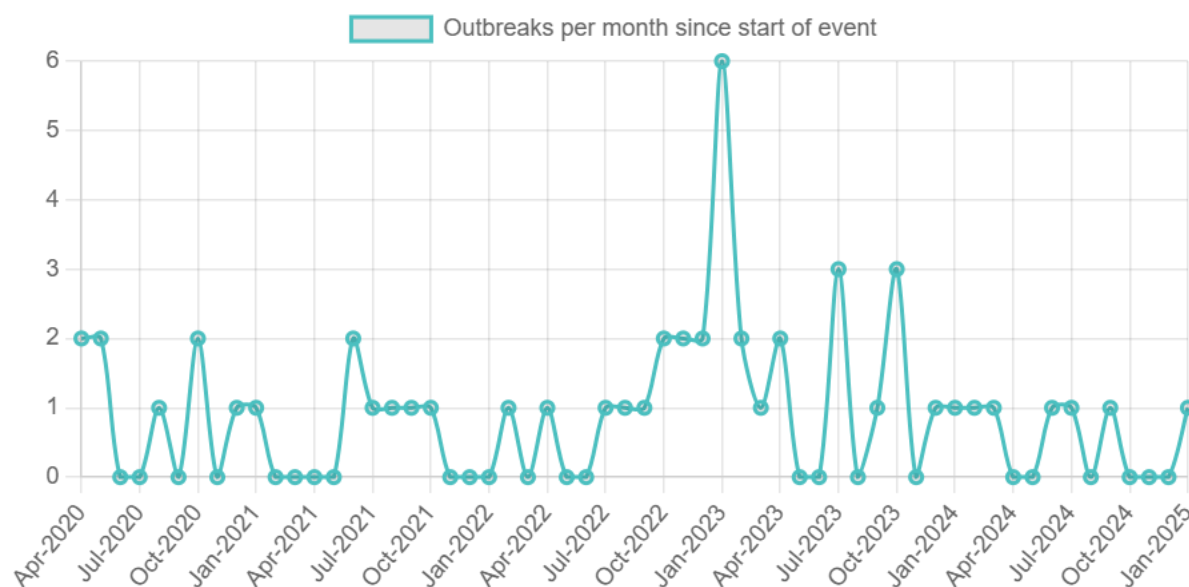
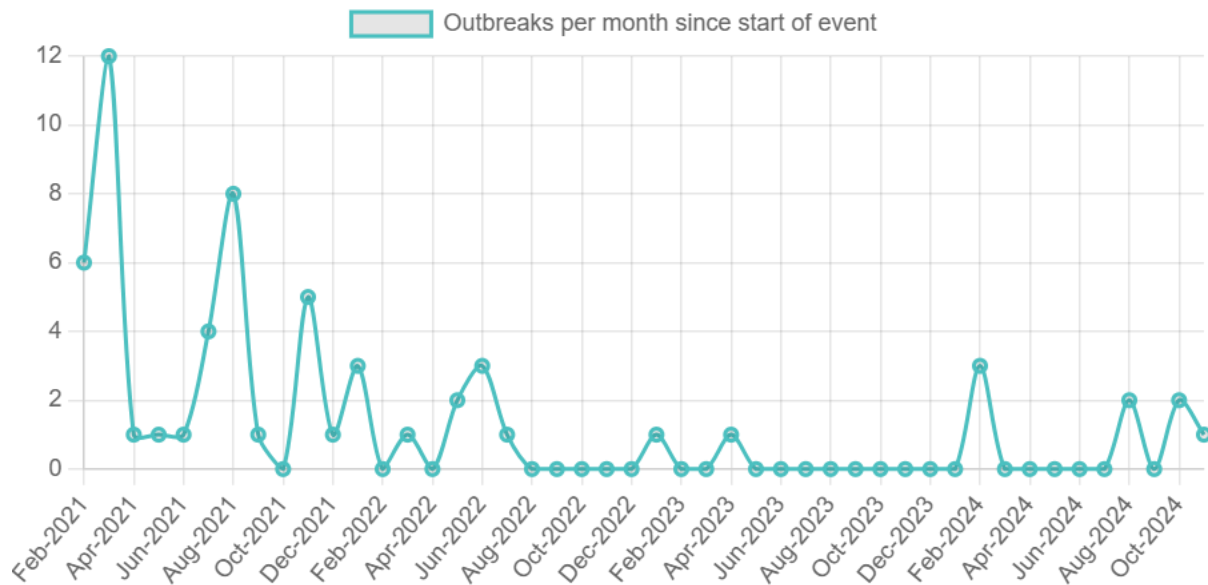



Figure 4: Western Cape Province outbreaks per month since start of event in 2021



5. Surveillance

Surveillance for ASF remains ongoing. All movements of pigs from infected properties and areas, during the period prior to and following diagnosis, are traced and any suspect disease outbreaks in pigs are investigated. If suspect clinical signs are observed, samples are collected to verify the diagnosis. Furthermore, any suspect cases of ASF must be reported to the responsible state veterinary office for investigation. This includes any sudden increase in mortalities of unknown cause.


Dr Mpho Maja
Director Animal Health